



Door and Jamb Preparation for Schlage Hardware

LOCK SERIES INDEX OF TEMPLATE SHEETS

A-Series Locks		Door			Template Number	
Function	Description	Door Edge Flat	Door Edge Bev.	Door Thickness	Wood or Composite	Metal
A10S thru A85PD	1" (25mm) Faceplate (standard with 2 ³ / ₈ " (60mm) backset)	x	x	1 ³ / ₈ " - 1 ⁷ / ₈ " (35mm-48mm)	A400	A863
	1" (25mm) Faceplate (lock extended inside only)	x	x	Over 1 ⁷ / ₈ " (48mm)	A402	
	1" (25mm) Faceplate, 1/4" (6mm) radius round corner	x	x	1 ³ / ₈ " - 1 ⁷ / ₈ " (35mm-48mm)	A403	
	1" (25mm) Faceplate, circular drive-in	x		1 ³ / ₈ " - 1 ⁷ / ₈ " (35mm-48mm)	A404	
	1" (25mm) Faceplate, 1/2" (13mm) rabbeted, strike included	x		1 ³ / ₈ " - 1 ⁷ / ₈ " (35mm-48mm)	A405	
	1 ¹ / ₈ " (29mm) Faceplate, (standard with 2 ³ / ₄ " (70mm) backset)	x	x	1 ³ / ₈ " - 1 ⁷ / ₈ " (35mm-48mm)	A406	A864
	1 ¹ / ₈ " (29mm) Faceplate, 1/2" (13mm) rabbeted, strike included	x		1 ³ / ₈ " - 1 ⁷ / ₈ " (35mm-48mm)	A408	
A170	Dummy trim, surface mounted	x		Various	A754	A755

Note:

Whenever backset options are listed at the bottom of a template sheet, backset must be indicated by the suffix letter as follows:

A = 1³/₄" (44mm) backset B = 2" (51mm) backset C = 2³/₈" (60mm) backset D = 2³/₄" (70mm) backset

E = 3³/₄" (95mm) backset F = 5" (127mm) backset G = Other (specify)

Example: A400-C (A-Series lock template #400 with 2³/₈" (60mm) backset)

A-Series Standard Strike		Jamb	
Number	Description	Template Number	
		Wood	Metal
10-001	ANSI standard for 1 ³ / ₈ " (35mm) doors	J454	J455

Note:

See strike template index for optional strikes.

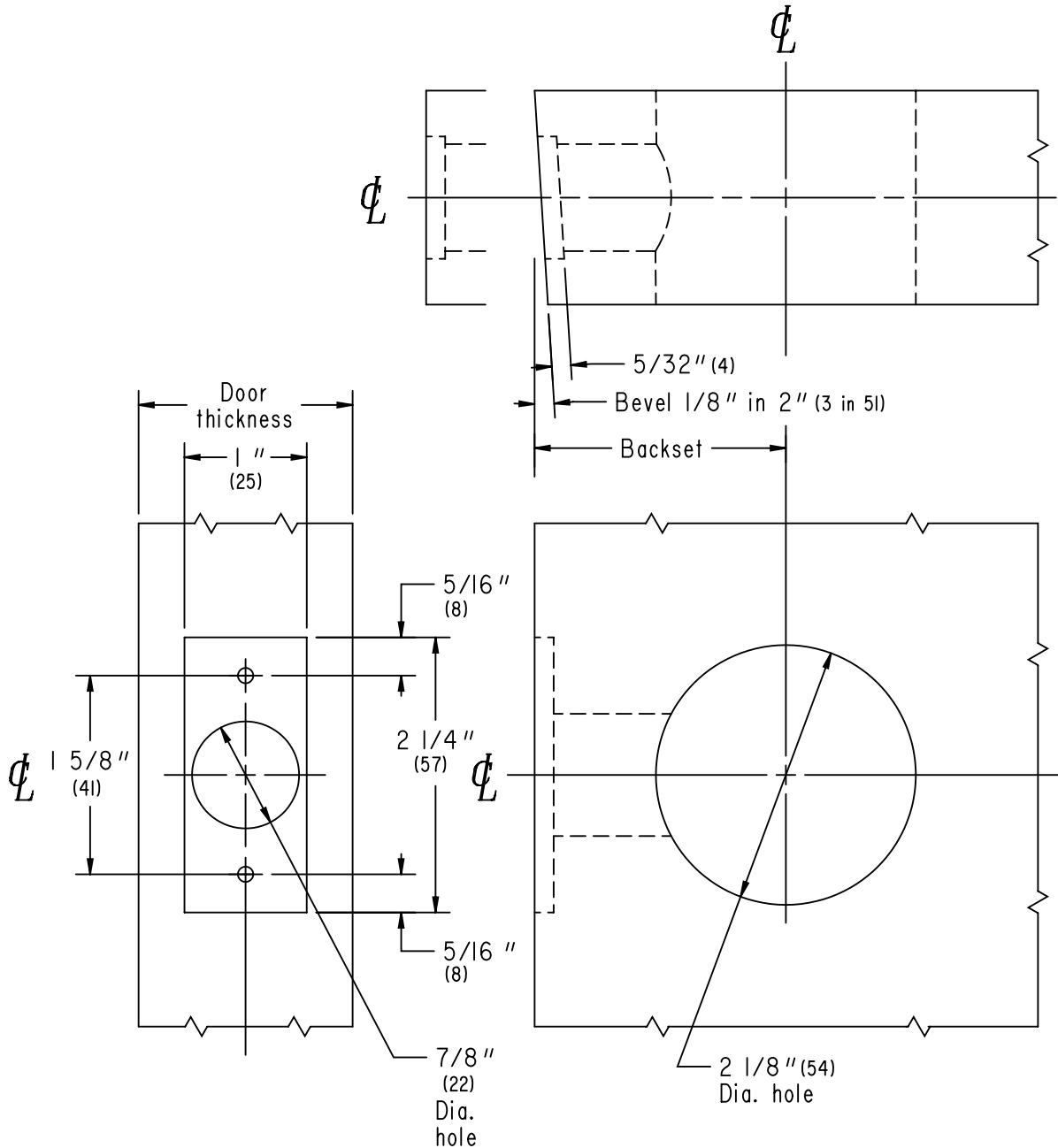
A10S
thru
A85PD

1³/₈" (35) to 1⁷/₈" (48) wood or composite doors
1" (25) faceplate, flat or beveled

Note: Dimensions shown in parenthesis () are in millimeters.

SCHLAGE®

A-Series



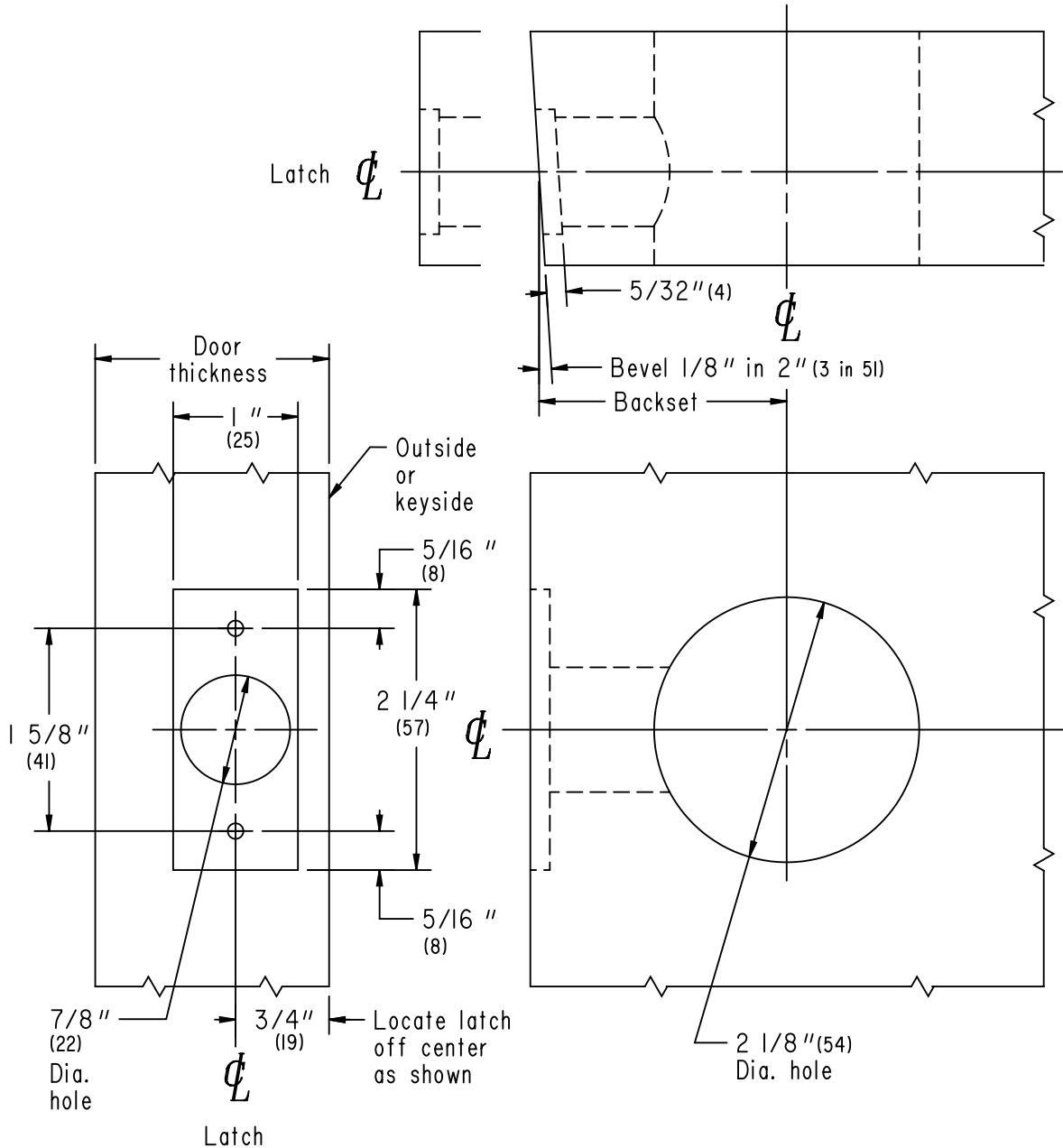
<p>BACKSETS</p> <p>A400-C, 2³/₈" (60) A400-F, 5" (127)</p> <p>A400-D, 2³/₄" (70) A400-G, other</p> <p>A400-E, 3³/₄" (95)</p>	<p>JOB _____</p> <p>DATE _____ DOOR THICKNESS _____</p> <p>REMARKS _____</p>	<p>TEMPLATE NO.</p> <p>A400</p>
---	--	--

A10S
thru
A85PD

Over 1 7/8" (48) wood or composite doors
1" (25) faceplate, flat or beveled
Note: Dimensions shown in parenthesis () are in millimeters.

SCHLAGE

A-Series



TEMPLATE NO.

A402

JOB _____

DATE _____ DOOR THICKNESS _____

REMARKS _____

BACKSETS

A402-C, 2 3/8" (60) A402-F, 5" (127)

A402-D, 2 3/4" (70) A402-G, other

A402-E, 3 3/4" (95)

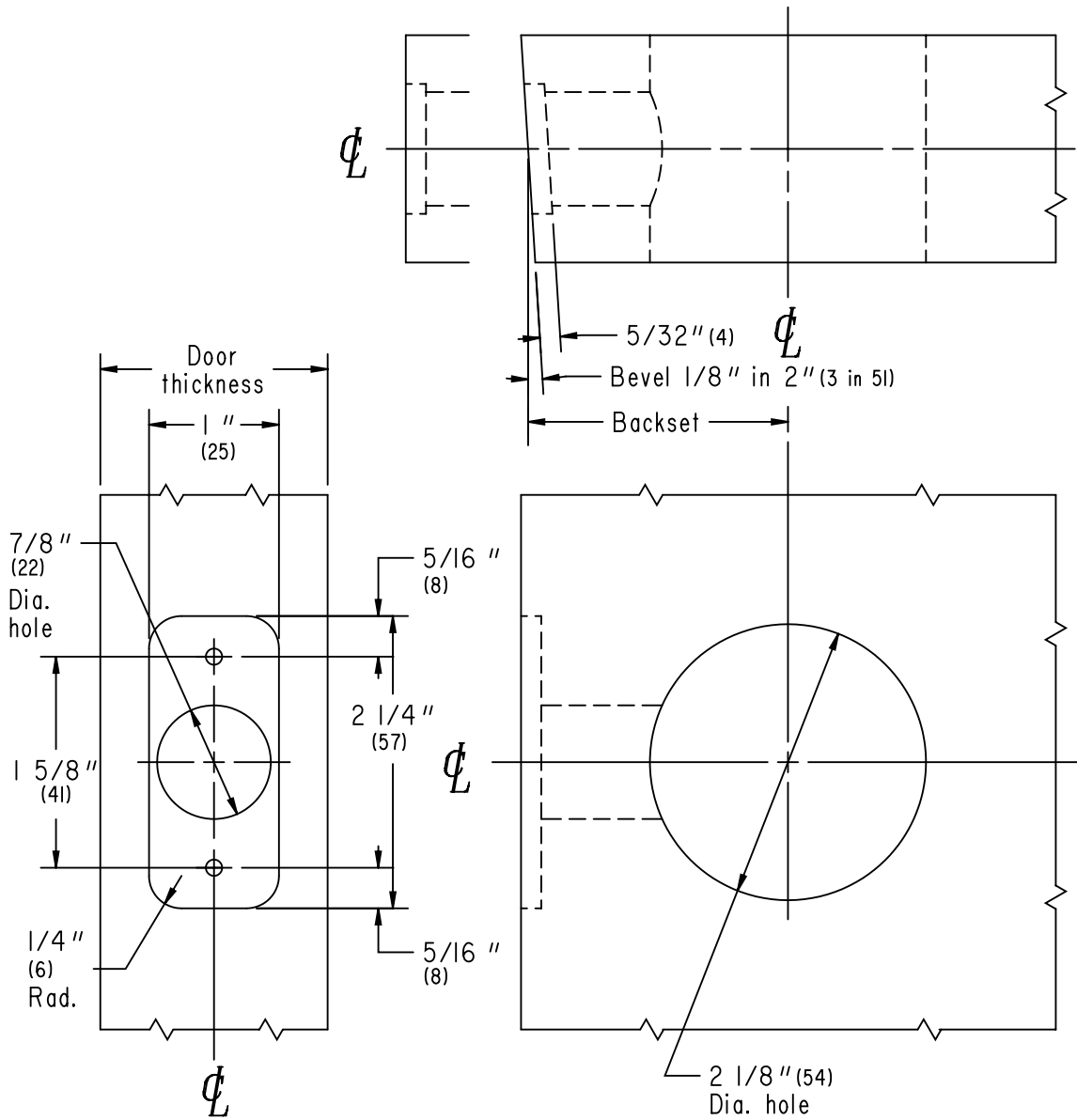
A10S
thru
A85PD

1³/₈" (35) to 1⁷/₈" (48) wood or composite doors
1" (25) faceplate, flat or beveled, 1/4" (6) radius corner

Note: Dimensions shown in parenthesis () are in millimeters.

SCHLAGE®

A-Series



<p>BACKSETS</p> <p>A403-C, 2³/₈" (60) A403-F, 5" (127)</p> <p>A403-D, 2³/₄" (70) A403-G, other</p> <p>A403-E, 3³/₄" (95)</p>	<p>JOB _____</p> <p>DATE _____ DOOR THICKNESS _____</p> <p>REMARKS _____</p>	<p>TEMPLATE NO.</p> <p>A403</p>
---	--	--

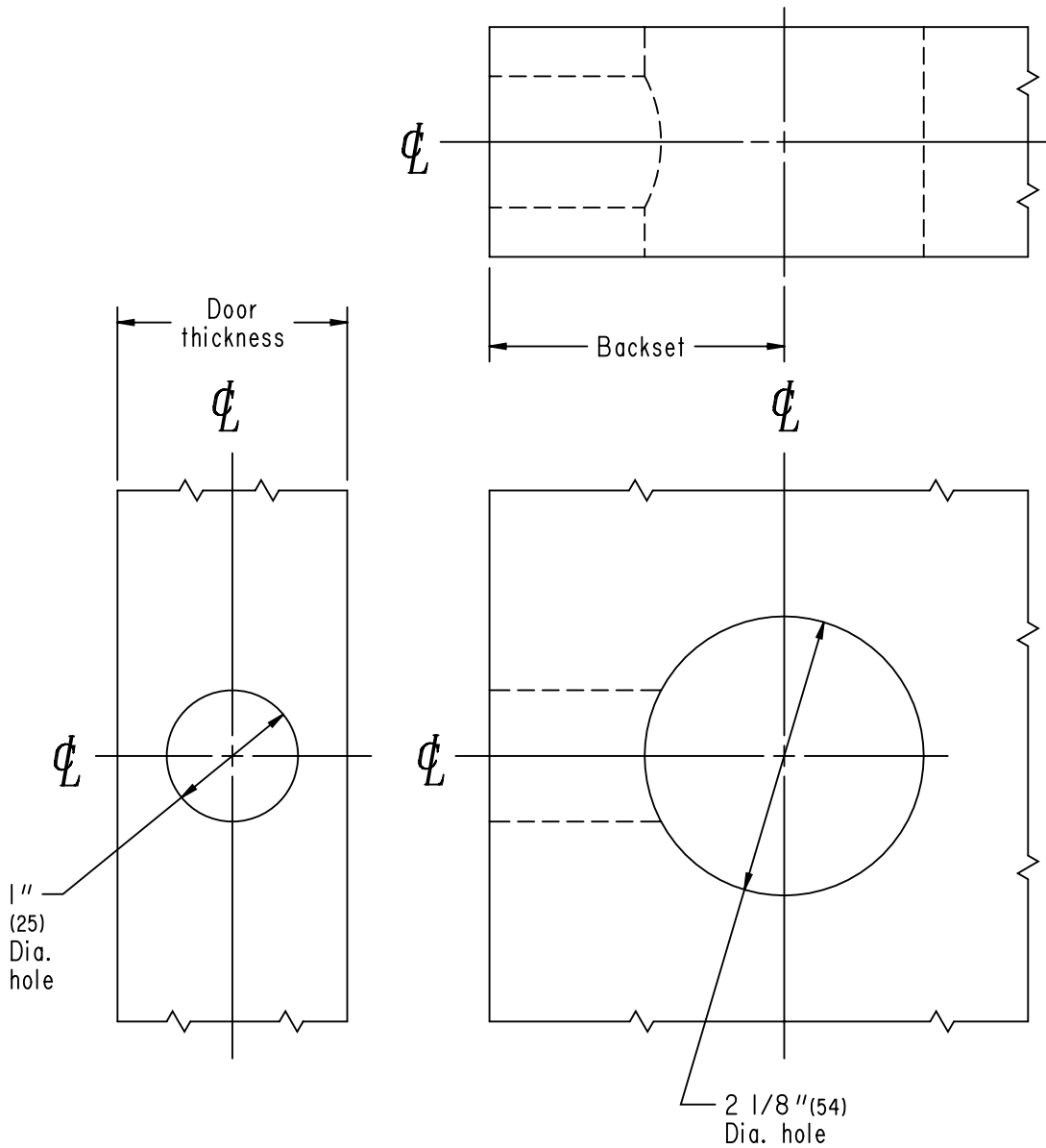
A10S
thru
A85PD

1³/₈" (35) to 1⁷/₈" (48) wood or composite doors
1" (25) circular faceplate, flat, drive-in latch

Note: Dimensions shown in parenthesis () are in millimeters.

SCHLAGE®

A-Series



TEMPLATE NO.

A404

JOB _____

DATE _____ DOOR THICKNESS _____

REMARKS _____

BACKSETS

A404-C, 2³/₈" (60)

A404-D, 2³/₄" (70)

A404-G, other

A10S
thru
A85PD

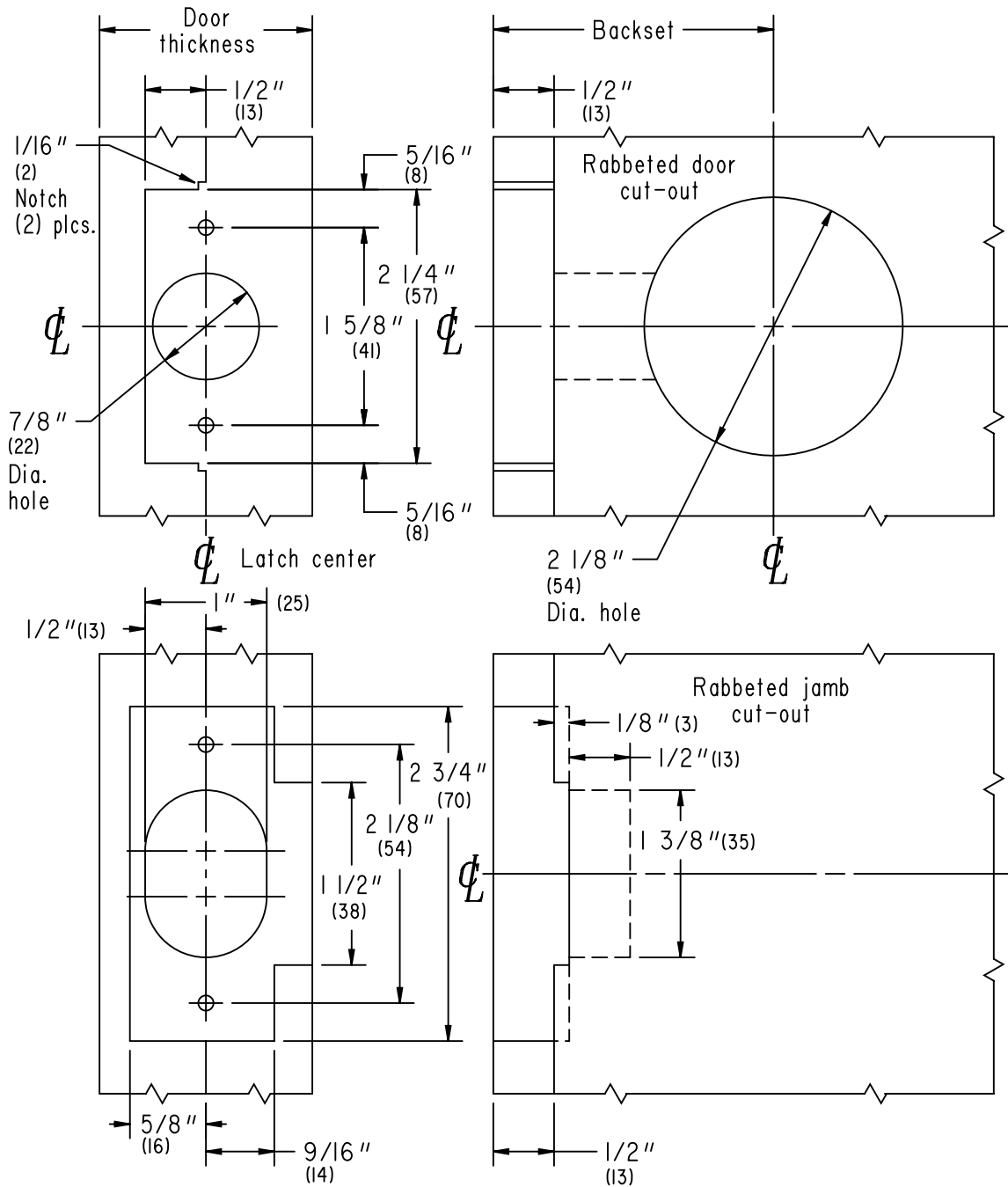
1³/₈" (35) to 1⁷/₈" (48) wood or composite doors

1" (25) flat, 1/2" (13) rabbeted faceplate and strike

Note: Dimensions shown in parenthesis () are in millimeters.

SCHLAGE®

A-Series



<p>BACKSETS</p> <p>A405-C, 2³/₈" (60) A405-F, 5" (127)</p> <p>A405-D, 2³/₄" (70) A405-G, other</p> <p>A405-E, 3³/₄" (95)</p>	<p>JOB _____</p> <p>DATE _____ DOOR THICKNESS _____</p> <p>REMARKS _____</p>	<p>TEMPLATE NO.</p> <p>A405</p>
---	--	--

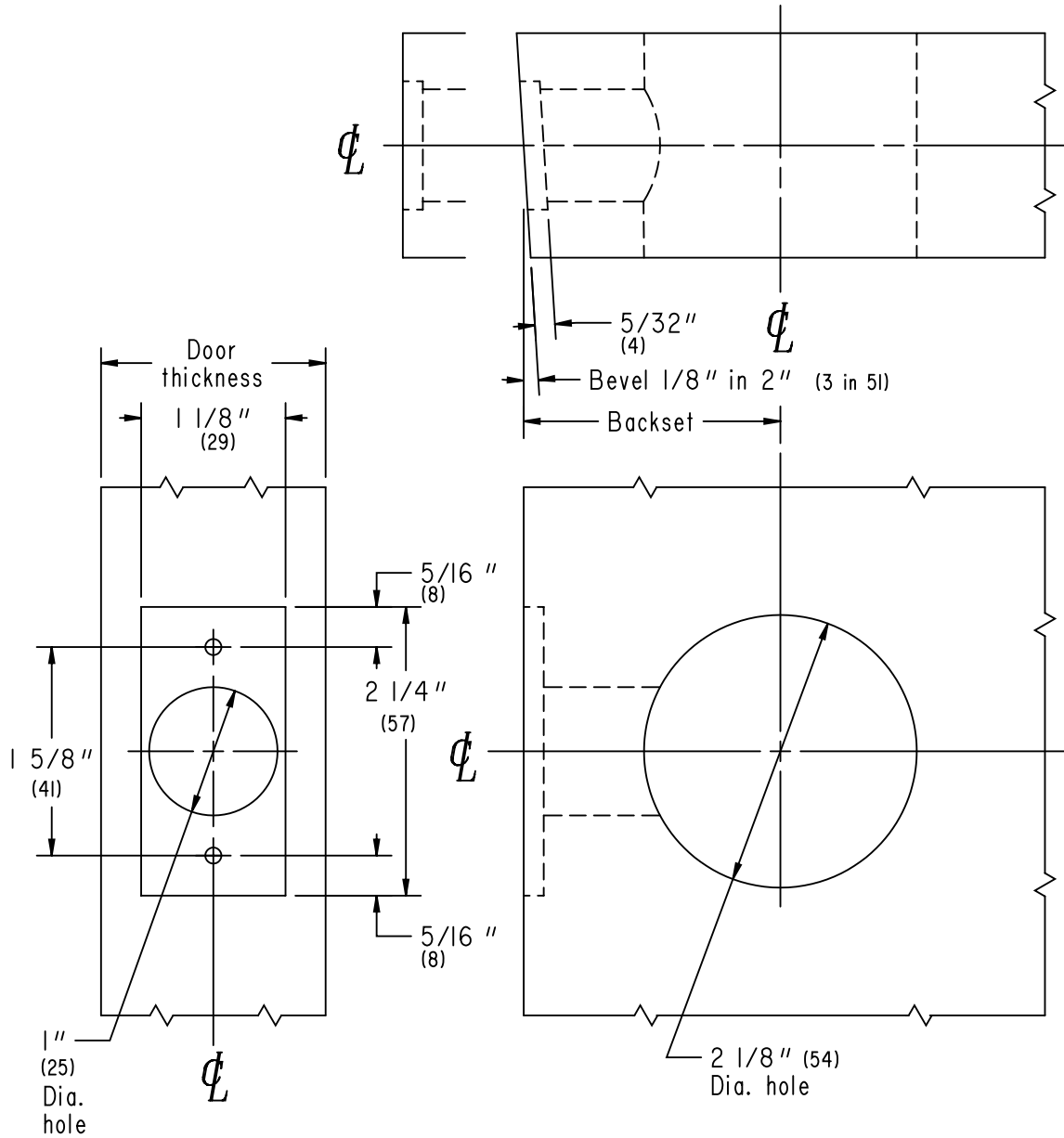
A10S
 thru
A85PD

1 3/8" (35) to 1 7/8" (48) wood or composite doors
 1 1/8" (29) faceplate, flat or beveled

Note: Dimensions shown in parenthesis () are in millimeters.

SCHLAGE®

A-Series



TEMPLATE NO.	JOB _____	BACKSETS
A406	DATE _____ DOOR THICKNESS _____	A406-C, 2 3/8" (60) A406-F, 5" (127)
REMARKS _____		A406-D, 2 3/4" (70) A406-G, other
		A406-E, 3 3/4" (95)

**A10S
thru
A85PD**

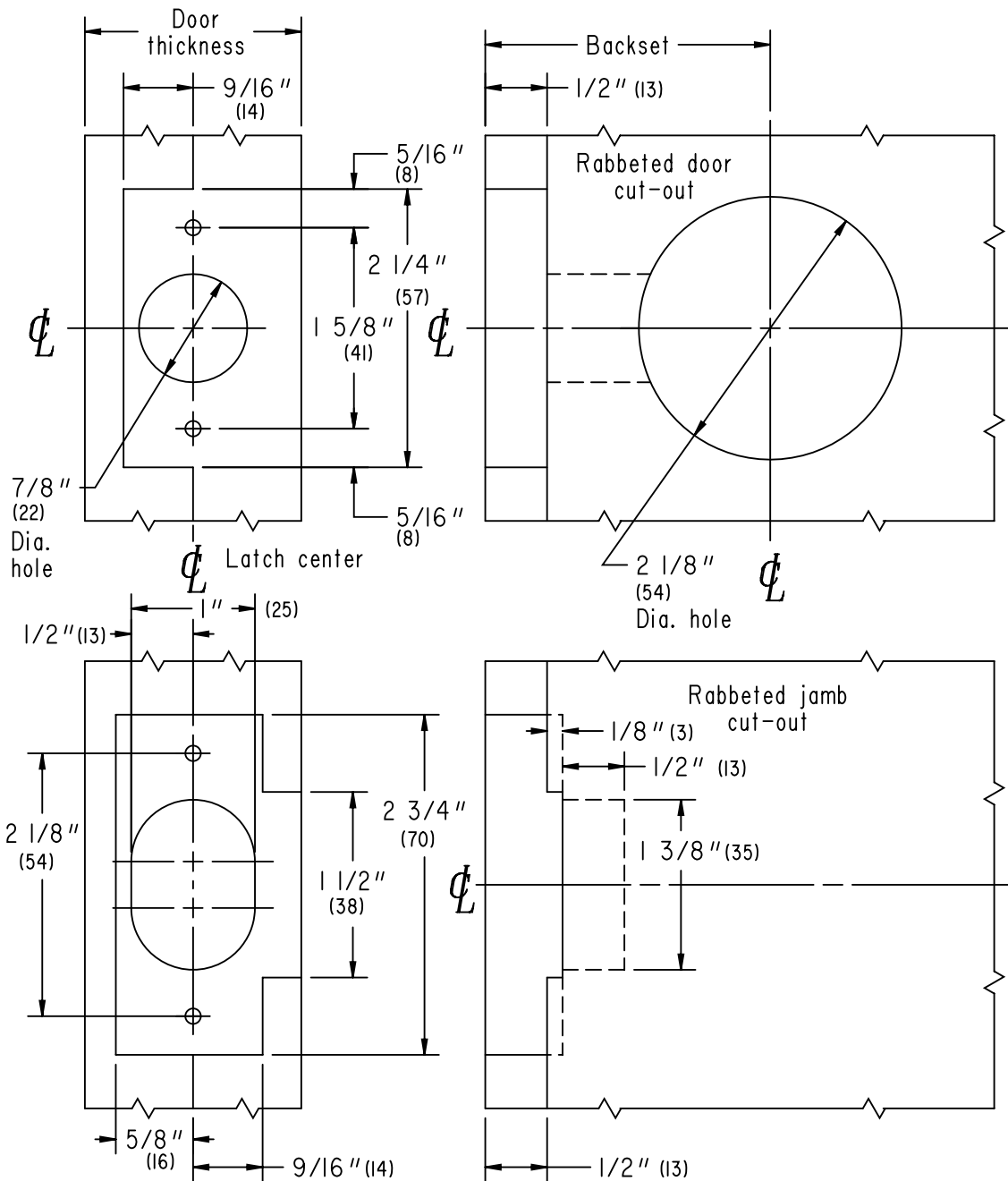
1³/₈" (35) to 1⁷/₈" (48) wood or composite doors

1¹/₈" (29) flat, 1/2" (13) rabbeted faceplate and strike

Note: Dimensions shown in parenthesis () are in millimeters.

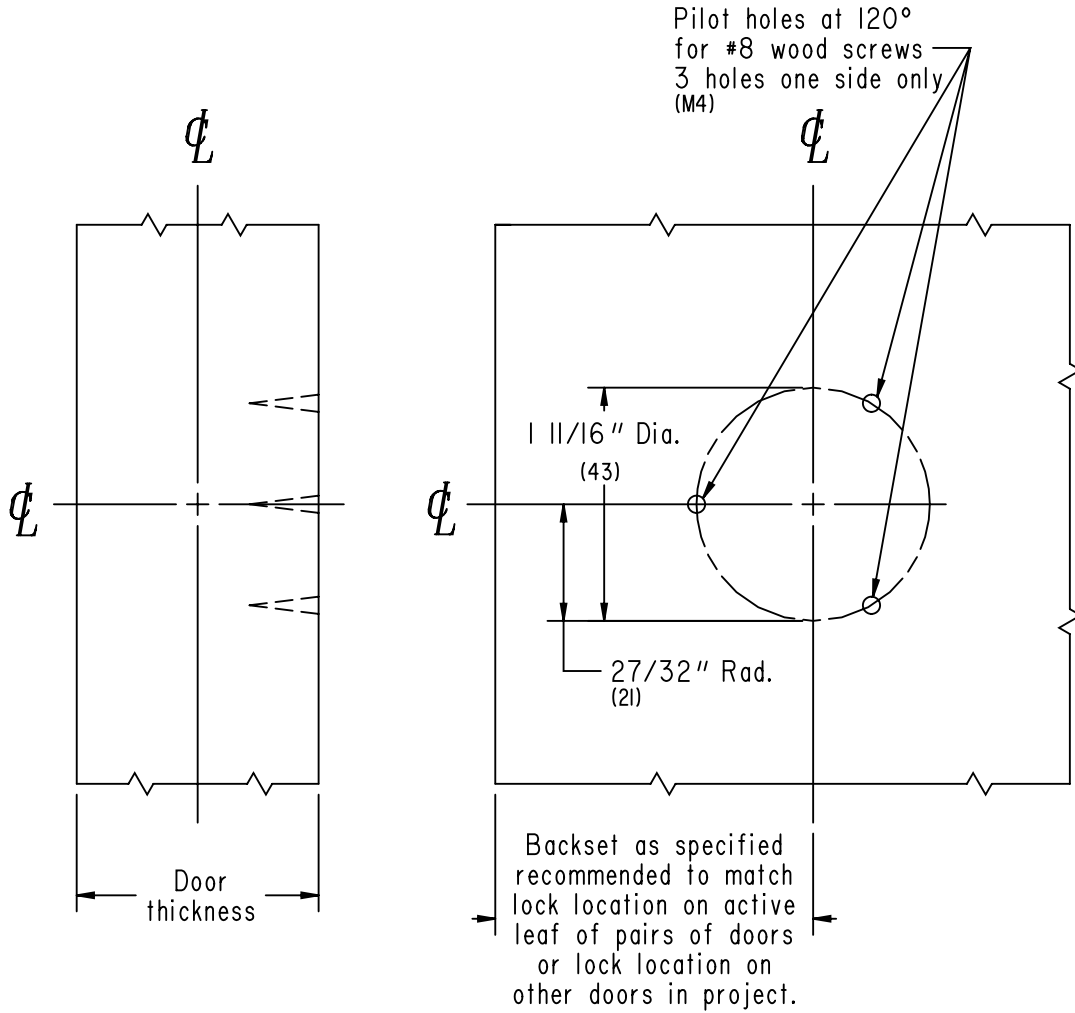
SCHLAGE®

A-Series



<p>BACKSETS</p> <p>A408-C, 2³/₈" (60) A408-F, 5" (127)</p> <p>A408-D, 2³/₄" (70) A408-G, other</p> <p>A408-E, 3³/₄" (95)</p>	<p>JOB _____</p> <p>DATE _____ DOOR THICKNESS _____</p> <p>REMARKS _____</p>	<p>TEMPLATE NO.</p> <p>A408</p>
---	--	--

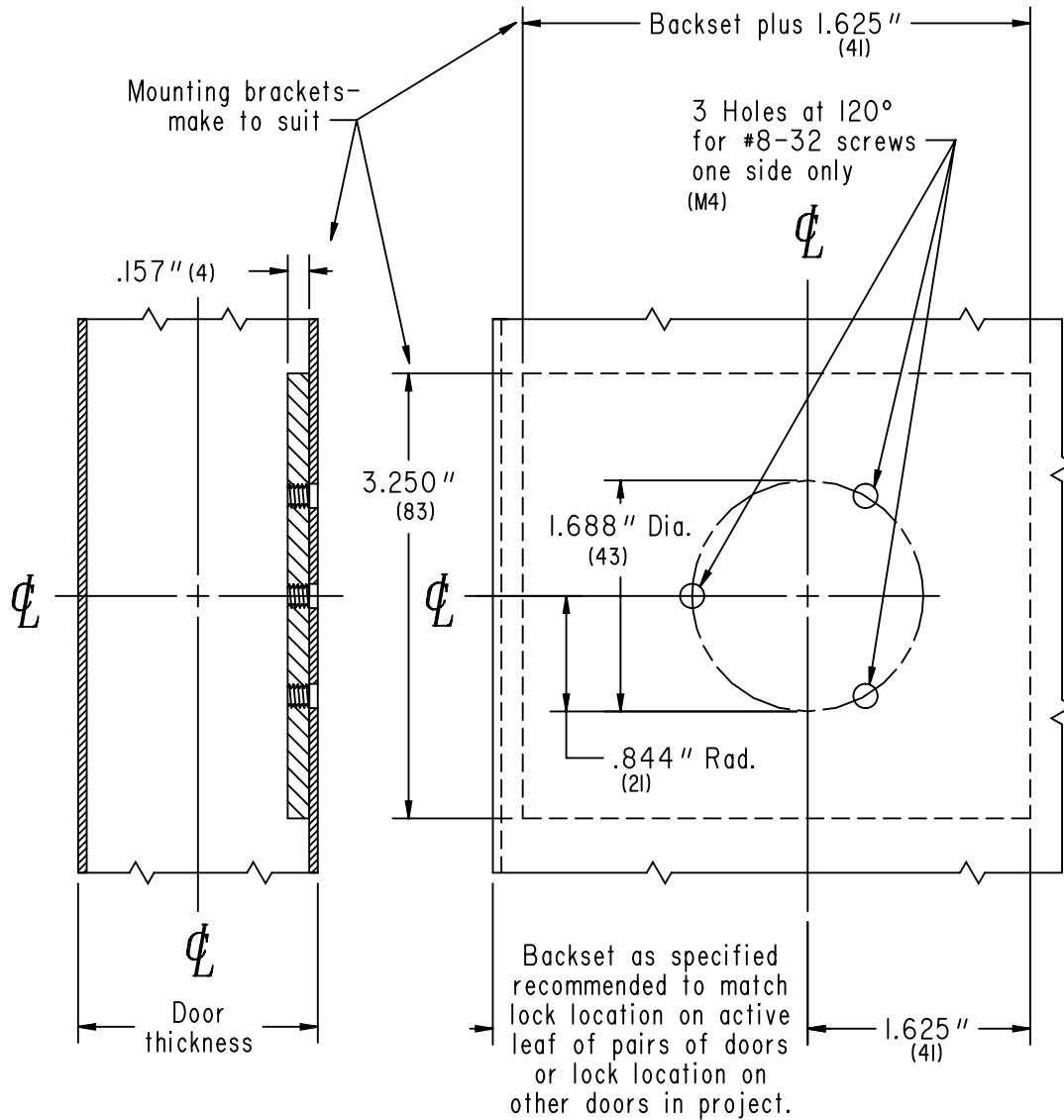
Note: Dimensions shown in parenthesis () are in millimeters.



This door preparation is oriented for right hand and right hand reverse doors. For left hand and left hand reverse doors mounting screw location must be rotated 180°.

<p>TEMPLATE NO.</p> <p>A754</p>	<p>JOB _____</p> <p>DATE _____ DOOR THICKNESS _____</p> <p>REMARKS _____</p>	<p>BACKSETS</p> <p>Any Backset</p>
--	--	------------------------------------

Note: Dimensions shown in parenthesis () are in millimeters.



This door preparation is oriented for right hand and right hand reverse doors. For left hand and left hand reverse doors mounting screw location must be rotated 180°.

<p>BACKSETS Any Backset</p>	<p>JOB _____ DATE _____ DOOR THICKNESS _____ REMARKS _____</p>	<p>TEMPLATE NO. A755</p>
---------------------------------	--	-------------------------------------

A10S
thru
A85PD

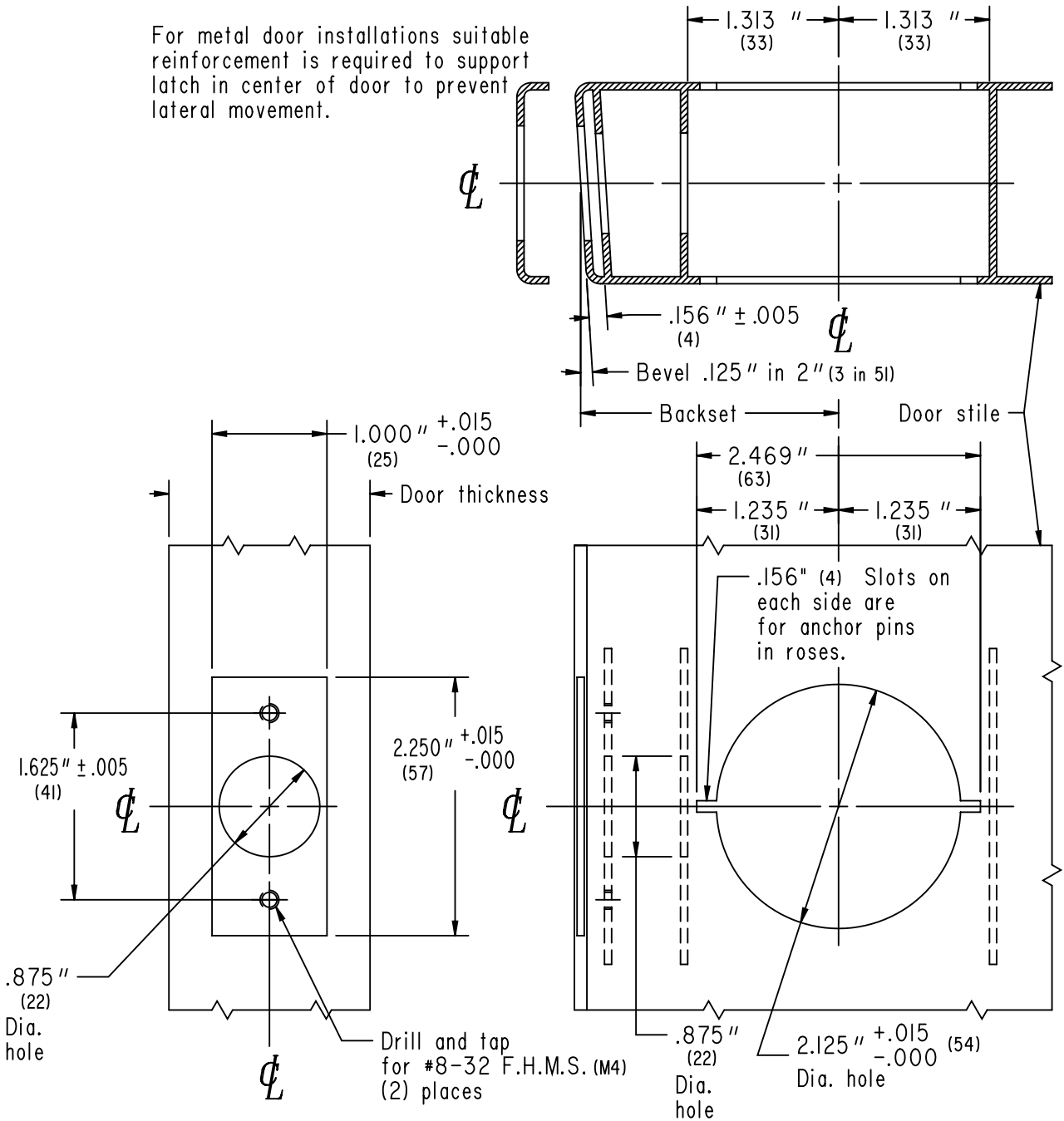
1³/₈" (35) to 1⁷/₈" (48) metal doors
1" (25) faceplate, flat or beveled

SCHLAGE

A-Series

Note: Dimensions shown in parenthesis () are in millimeters.

For metal door installations suitable reinforcement is required to support latch in center of door to prevent lateral movement.



TEMPLATE NO.

A863

JOB _____

DATE _____ DOOR THICKNESS _____

REMARKS _____

BACKSETS

A863-C, 2³/₈" (60) A863-F, 5" (127)

A863-D, 2³/₄" (70) A863-G, other

A863-E, 3³/₄" (95)

A10S
thru
A85PD

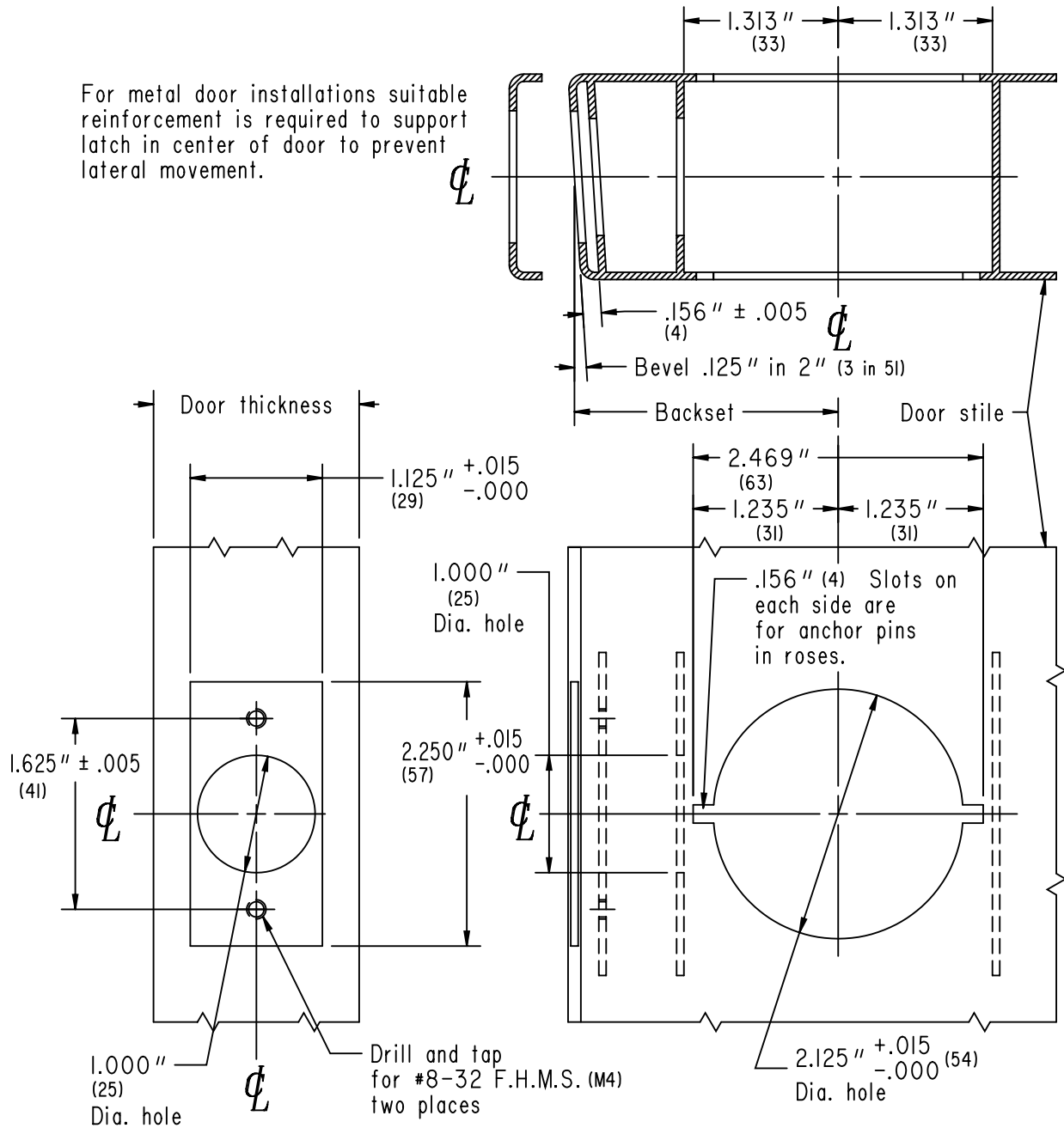
1³/₈" (35) to 1⁷/₈" (48) metal doors
1¹/₈" (29) faceplate, flat or beveled

SCHLAGE®

A-Series

Note: Dimensions shown in parenthesis () are in millimeters.

For metal door installations suitable reinforcement is required to support latch in center of door to prevent lateral movement.



BACKSETS	JOB _____	TEMPLATE NO.
A864-C, 2 ³ / ₈ " (60) A864-F, 5" (127)	DATE _____ DOOR THICKNESS _____	A864
A864-D, 2 ³ / ₄ " (70) A864-G, other	REMARKS _____	
A864-E, 3 ³ / ₄ " (95)		